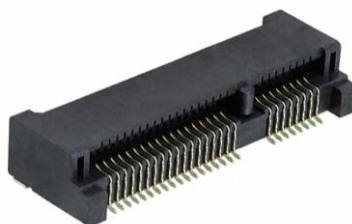


General

Product name	Edgecard to PCB for Mini PCI Express
Manufacturer	Molex
Part Number	67910-5700
Item Number (Art.-Nr.)	7773010

Product image



Physical

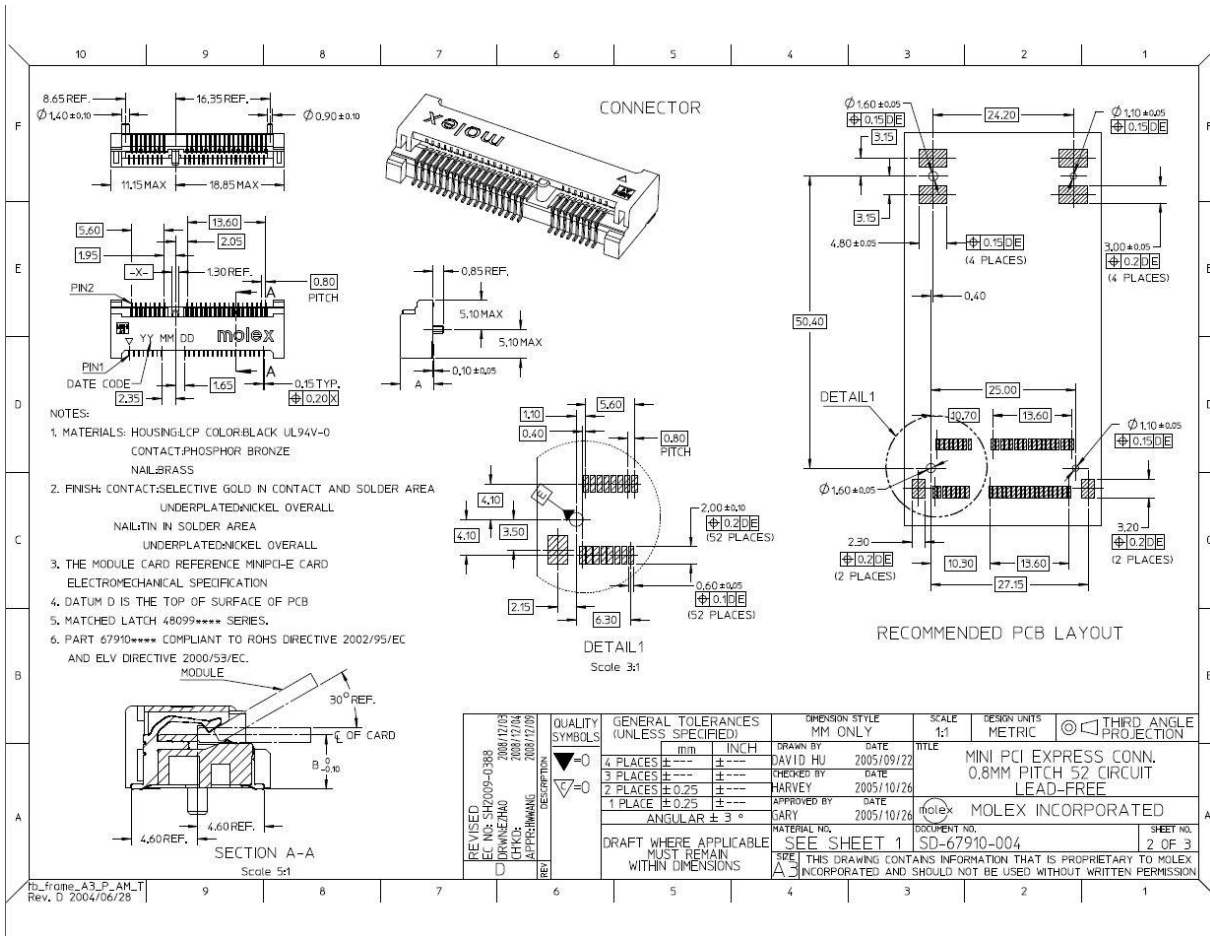
(p)ower-(s)ignal Configuration	52s - 0p
Circuits (Loaded)	52
Circuits (maximum)	52
Durability (mating cycles max)	50
Entry Angle	90° Angle (Side Entry)
Keying to Mating Part	Yes
Material - Plating Mating	Gold
Material - Plating Termination	Tin
Net Weight	1.631/g
PCB Locator	Yes
PCB Retention	Yes
PCB Thickness - Recommended	1.00mm, 1.20mm
Packaging Type	Embossed Tape on Reel
Pitch - Mating Interface	0.80mm
Pitch - Termination Interface	0.80mm
Temperature Range - Operating	-40°C to +85°C
Termination Interface: Style	Surface Mount

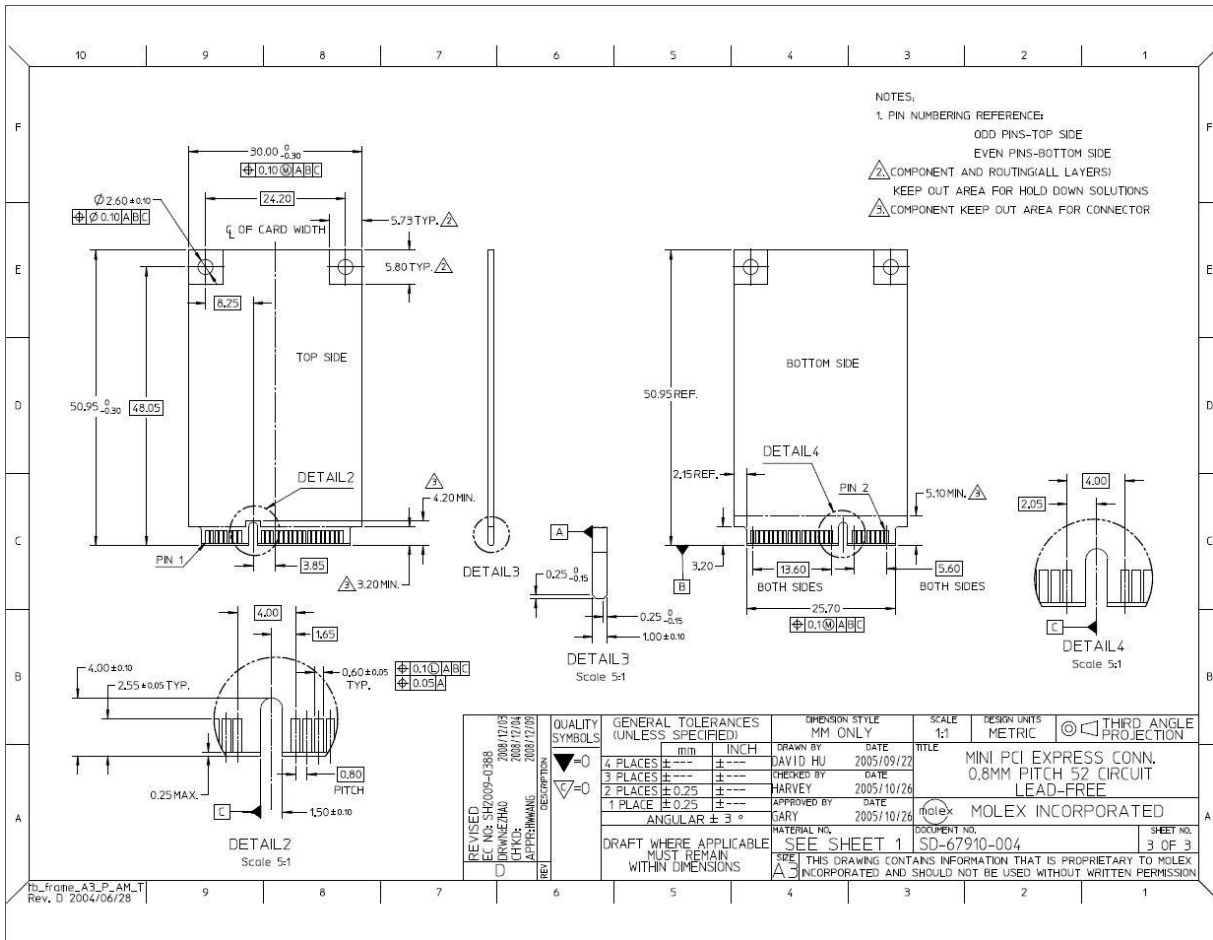
Electrical

Current - Maximum per Contact	1.1A
Voltage - Maximum	50V

Solder Process Data

Duration at Max. Process Temperature (seconds)	10
Lead-free Process Capability	Reflow Capable (SMT only)
Max. Cycles at Max. Process Temperature	2
Process Temperature max. C	260





Td_Frame_A3_P_AM_T
Rev. D 2004/06/28